

# KLEAN LEAF

Private Label Laundry  
Detergent Sheets  
Manufacturer



Luna Wang  
[www.kleanlefa.us](http://www.kleanlefa.us)  
[hello@kleanleaf.us](mailto:hello@kleanleaf.us)

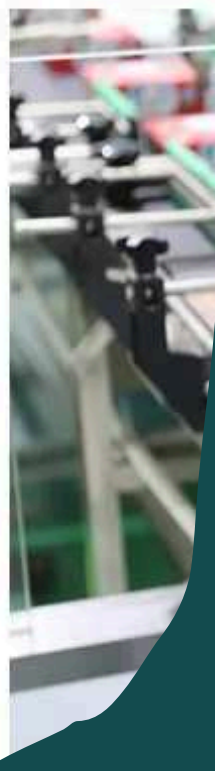




# ABOUT US

Klean Leaf specializes in high-quality, eco-friendly laundry detergent sheets, with extensive experience in private label services for brands worldwide.

- **Top-Tier Manufacturing:** Our products are made by one of China's largest and most reputable factories in Guangdong, ensuring consistent quality and reliability.
- **Columbus Office:** For North American clients, our Columbus, Ohio office manages all business operations, customer service, and logistics, providing local support and seamless coordination.
- **Private Label Expertise:** We serve numerous brands across the U.S., Europe, and Australia, delivering customized solutions that align with each client's unique needs.





# PRODUCT BENEFITS

**Eco-Friendly:** Our detergent sheets are packaged in plastic-free, biodegradable materials, reducing environmental impact and aligning with consumer demand for sustainable products.

**Compact and Lightweight:** Our sheets save on storage space and reduce shipping weight, cutting down on transportation emissions and overall carbon footprint.

**Water-Conserving:** Unlike traditional detergents, our sheets do not contain added water, making them a more sustainable choice.

**Easy to Use:** Simply add a sheet to the washing machine—our sheets dissolve completely, leaving no mess or residue.





**NO MESS**

# **KLEAN LEAF DETERGENT SHEETS**



**NO PLASTIC**



**COMPACT**



**EFFECTIVE**



**QUICK DISSOLVE**

Klean Leaf Detergent Sheets offer a clean and convenient laundry solution with zero mess, compact design, and effective stain-fighting power. These eco-friendly sheets dissolve quickly, even in cold water, leaving no residue and reducing plastic waste by eliminating the need for bulky containers.





# MANUFACTURING AND SUSTAINABILITY

**Efficient Production:** Our advanced manufacturing ensures each sheet is ultra-concentrated for powerful cleaning while minimizing waste.

**Commitment to the Environment:** Klean Leaf continuously enhances production processes to maintain high standards of efficiency and environmental care.



# PACKAGING OPTION

**Standard Packaging:** Our most popular option includes 30 sheets in a biodegradable paper bag.

**Alternative Packaging:** For clients seeking a different presentation, we also offer a sturdy paper box option.

**Sheet Design:** Each sheet features a split line; half a sheet is sufficient for a single laundry load, allowing each sheet to cover two loads.

**Load Capacity:** A 30-sheet bag provides up to 60 laundry loads, offering excellent value and convenience for consumers.

**Full-Service Support:** Our private label services cover every step, including manufacturing, packaging, freight, and delivery directly to your warehouse.



# SAMPLE REQUEST

---

Curious to experience Klean Leaf's quality?

- **Get Your Samples:** Reach out to us, and we'll arrange to ship sample packs directly from our Columbus office.
- **Variety of Scents:** Our sample pack includes a range of scents to help you find the perfect match for your brand.

We're here to help you explore the options and see why Klean Leaf is the right choice for your private label needs. Contact us today to get started!





# FULL CUSTOMIZATION



## Customized Formulation

We offer flexible solutions, allowing clients to choose from our standard detergent formulations or create a unique formula tailored to specific requirements.



## Customized Color

Our factory provides options to adjust the color of detergent sheets to align with your branding. Whether you need a specific shade to complement your packaging or a distinct color to stand out.



## Customized Dimensions

Our team is dedicated to meeting unique client needs by offering customizable sheet dimensions. Whether you need larger or smaller sheets, we'll collaborate with you to ensure the product fits your specifications precisely.



# QUALITY ASSURANCE



## MSDS DOCUMENTATION


Our product includes full Material Safety Data Sheets (MSDS) for complete transparency on ingredients and safety.

## CERTIFIED FOR QUALITY AND SAFETY

We are proud to hold prestigious certifications such as **ISO 9001, ISO 22716 GMP, OECD 301B, and MSDS**, underscoring our unwavering commitment to quality and safety.

## THIRD-PARTY TESTING

Klean Leaf products undergo rigorous quality checks, with options for additional third-party testing upon request to meet specific client needs.





# PRICING STRUCTURE

**Flexible Pricing:** Pricing varies based on your chosen packaging style, the number of sheets per unit, and the order quantity.

**All-Inclusive Service:** Our pricing covers the full scope of services, including manufacturing, packaging, logistics, and direct delivery to your warehouse.

**Contact Us:** For detailed pricing information, please reach out. We're happy to provide a customized quote that fits your needs.

**MOQ (Minimum Order Quantity):** The minimum order quantity is 150,000 sheets. You can decide how many sheets are included per pack: For packs of 30 sheets, the MOQ will be 5,000 units. For packs of 50 sheets, the MOQ is 3,000 units.







# WORKFLOW

**Pick a Scent:** Choose the scent that best suits your brand from the samples we provided. This step allows you to align the fragrance with your brand identity.

**Artwork Submission:** Once your package design is complete, please send it to us in both .ai and .pdf formats. Our team will then integrate your artwork into the production process.

**Package Samples:** We'll work with our packaging team to create your package samples. The first two versions are provided free of charge. The third version will incur a \$300 fee, with this cost applying to any additional changes.

**Approval:** After confirming the product scent, packaging, and sample quality, give us the green light to proceed with full production.

**Full Service:** Our all-inclusive service covers every stage, from manufacturing and packaging to customs, freight, and direct delivery to your warehouse.

**Lead Time:** For deliveries to the US, the lead time is approximately 35-45 days from order confirmation.





hello@klean.us

KLEAN LEAF

www.kleanleaf.us

# EXPERIENCE AND COMMITMENT TO QUALITY

**Global Reach:** We proudly serve a wide range of customers across the United States, Europe, and Australia, with extensive experience in exporting and managing international logistics.

**Private Label Expertise:** Our team specializes in private label services, providing end-to-end support for brands looking to offer high-quality, eco-friendly laundry detergent sheets under their own label.

**Quality and Service:** At Klean Leaf, we are dedicated to delivering the highest quality products and exceptional service. We prioritize customer satisfaction at every stage, ensuring a seamless experience from development to delivery.





# THANK YOU.

[www.kleanleaf.us](http://www.kleanleaf.us)  
614.906.5129  
Luna Wang  
[hello@kleanleaf.us](mailto:hello@kleanleaf.us)